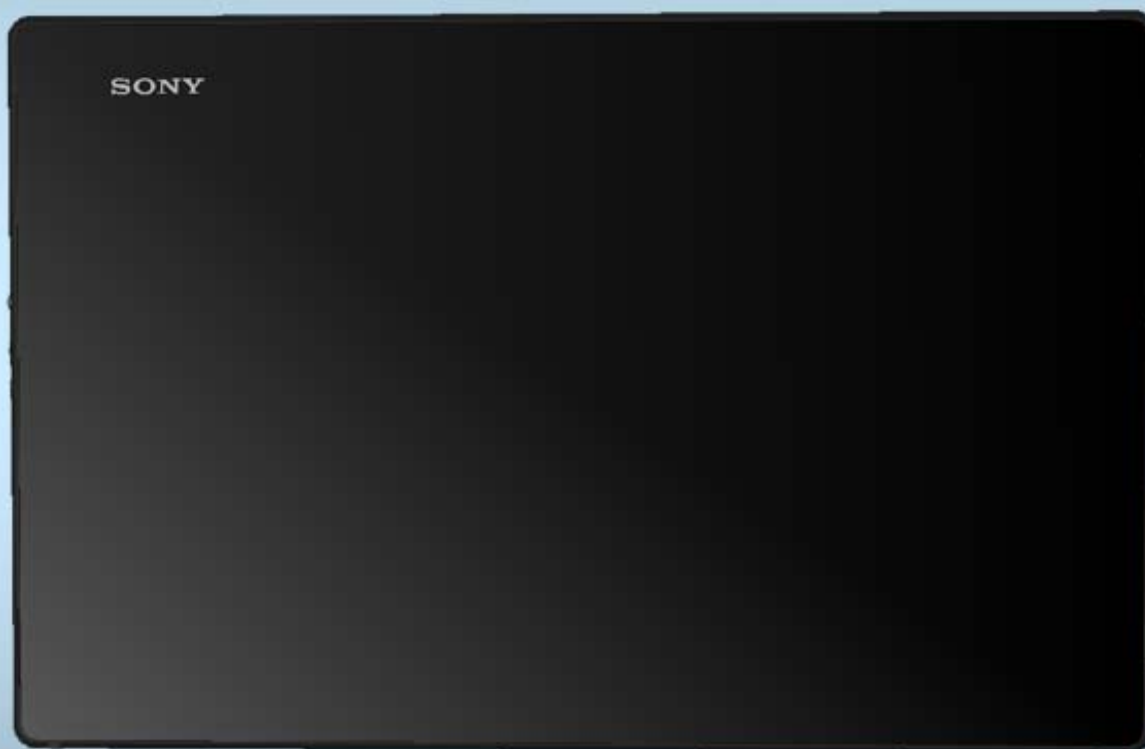


## Component Replacement - electrical -



*Xperia™ Z4 Tablet*  
*SGP712, SGP771*

## CONTENTS

1	Replaceable Components .....	3
2	Component Placing.....	5
3	Additional Repair info .....	6
4	Revision History .....	13

***For general information about electrical repair related issues, refer to  
1220-1336: Generic Repair Manual - electrical***

***Baking prior to repair is required, if the board have been exposed to air more than 12 hours from  
PWB package opening. Too long exposure time increase the level of moisture in PWB and the  
PWB could delaminate during repair process and result in direct or latent failures and reduce  
reliability.***

***The boards shall be baked in 125°C ±5°C for 4 hours.***

***Test after electrical replacement: refer to 1273-1772 Mechanical Test Instruction***

***All Electrical components are RLC level B, Reversed Logistic Classification, See the Spare Part  
Handling chapter in Mechanical/Generic Repair Manual 1220-1333.***

***Do not remove shield can lids (Heat pasta are added and RF performance will be damaged)***

## 1 Replaceable Components

### EXPLANATION OF ABBREVIATIONS USED IN THE COLUMN 'COMMENTS' BELOW

#### **COMPONENT LOCATION**

**P** = Primary side

**S** = Secondary side

#### **REPAIR METHOD**

**HA** = Hot Air (removal & mounting)

**ST** = Soldering Tool (removal & mounting)

**HA/ST** = Hot Air for removal - Soldering Tool for mounting

**BGA** = BGA Station

**BH** = Bottom Heater

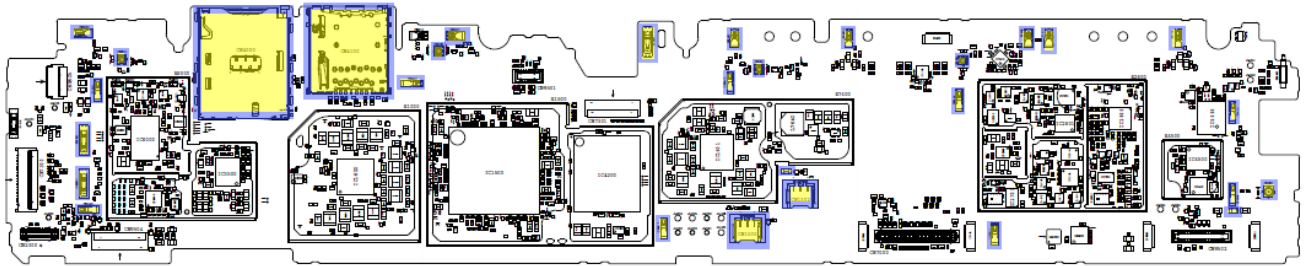
#### **ADDITIONAL INFORMATION**

⇒1 (2,3,4, etc.) = Proceed to 'Additional Repair Info' for further instructions in the indicated section(s).

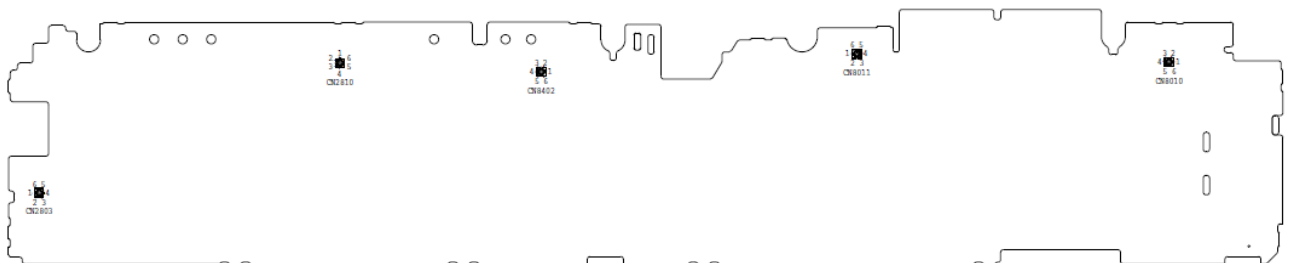
Position	Component	Part no.	Comments
CN1300	Conn WtB Receptacle 3p	1277-3464	P HA+BH ⇒1
CN1302	Conn WtB Receptacle 3p	1277-3464	P HA+BH ⇒1
CN2640	Conn Leaf Spring Plug 1p	1289-4802	P HA+BH ⇒2
CN2642	Conn Leaf Spring Plug 1p	1289-4802	P HA+BH ⇒3
CN2643	Conn Leaf Spring Plug 1p	1289-4802	P HA+BH ⇒4
CN2644	Conn Leaf Spring Plug 1p	1289-4802	P HA+BH ⇒5
CN2645	Conn Leaf Spring Plug 1p	1289-4802	P HA+BH ⇒6
CN2646	Conn Leaf Spring Plug 1p	1289-4802	P HA+BH ⇒7
CN2647	Conn Leaf Spring Plug 1p	1289-4802	P HA+BH ⇒8
CN2648	Conn Leaf Spring Plug 1p	1289-4802	P HA+BH ⇒9
CN2649	Conn Leaf Spring Plug 1p	1289-4802	P HA+BH ⇒10
CN2661	Conn Leaf Spring Plug 1p	1292-0026	P HA+BH ⇒11
CN2662	Conn Leaf Spring Plug 1p	1292-0026	P HA+BH ⇒11
CN2801	Conn Coax Receptacle 1p	1261-3585	P HA+BH ⇒12
CN2804	Conn Coax Receptacle 1p	1287-3442	P HA+BH ⇒13
CN4000	Connector nanoSIM Card	1291-3024	P HA+BH or BGA ⇒14
CN4100	Connector Micro SD Card	1291-3039	P HA+BH or BGA ⇒15
CN5550	Conn Leaf Spring Plug 1p	1289-4721	P HA+BH ⇒16
CN5551	Conn Leaf Spring Plug 1p	1289-4721	P HA+BH ⇒17
CN8000	Conn Leaf Spring Plug 1p	1292-0026	P HA+BH ⇒18
CN8003	Conn Coax Receptacle 1p	1287-3442	P HA+BH ⇒19
CN8007	Conn Leaf Spring Plug 1p	1292-0026	P HA+BH ⇒20
CN8008	Conn Coax Receptacle 1p	1287-3442	P HA+BH ⇒21
CN8401	Conn Coax Receptacle 1p	1287-3442	P HA+BH ⇒22
CN8452	Conn Leaf Spring Plug 1p	1292-0026	P HA+BH ⇒23
CN8650	Conn Leaf Spring Plug 1p	1289-4882	P HA+BH ⇒24
CN8651	Conn Leaf Spring Plug 1p	1289-4882	P HA+BH ⇒24
FB2205	Filter 220ohm 0603 2A 0.05ohm Bead	1001-1896	P HA+BH ⇒25
R1306	Resistor 0.01 Ohm +/-1% 200.0 mW (1.6x0.	1238-2147	P HA+BH ⇒26

## 2 Component Placing

To access the Component Placing document, double-click the icon below.  
Applicable for on-screen viewing only – icon not shown on hard-copies.



Primary side



Secondary side

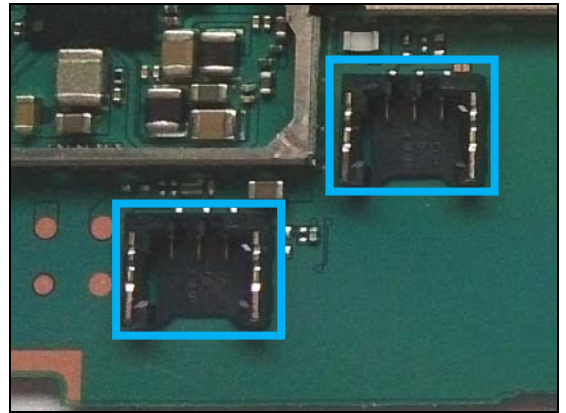
## 3 Additional Repair info

1

CN1300, CN1302

**Replace if mechanical damaged. (Phone dead or power off)**

**Protect the other connector with capton tape!**

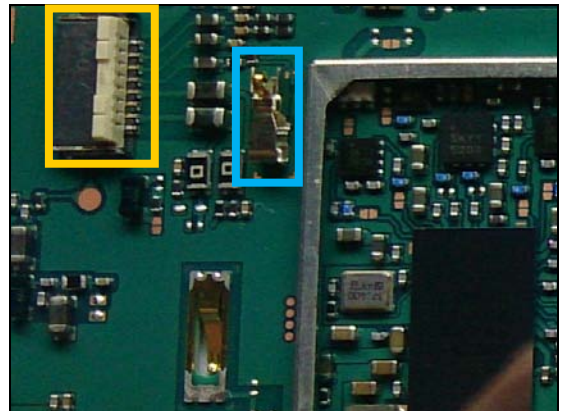


2

CN2640

**Replace if mechanical damaged. GND Contact (No or bad WLAN / BT)**

**Protect the BtB connector with capton tape!**

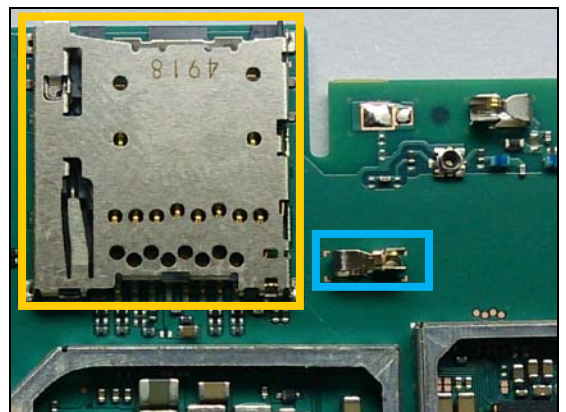


3

CN2642

**Replace if mechanical damaged. GND Contact (No or bad WLAN / BT)**

**Protect the SD connector with capton tape!**

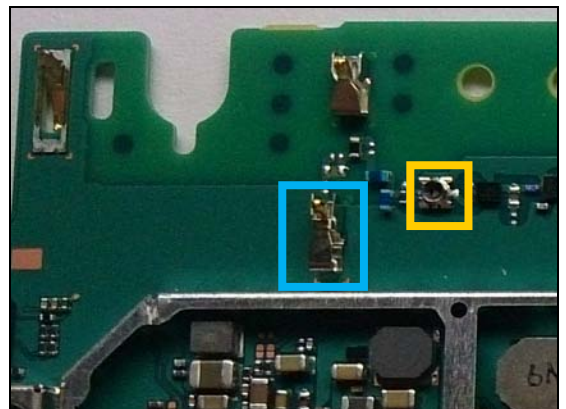


4

CN2643

**Replace if mechanical damaged. GND Contact (No or bad GPS)**

**Protect the RF connector with capton tape!**



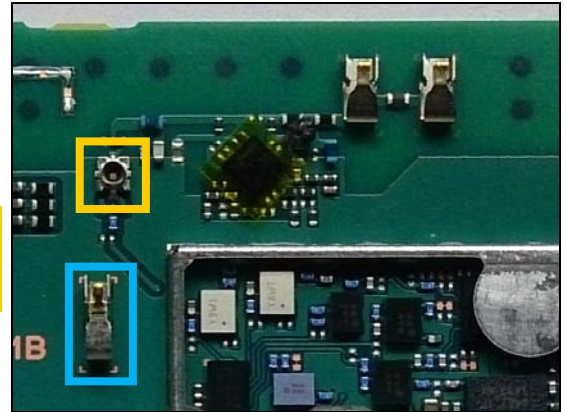
## Repair Actions: Additional Repair Info

5

CN2644

**Replace if mechanical damaged. GND Contact (No or bad network, main antenna)**

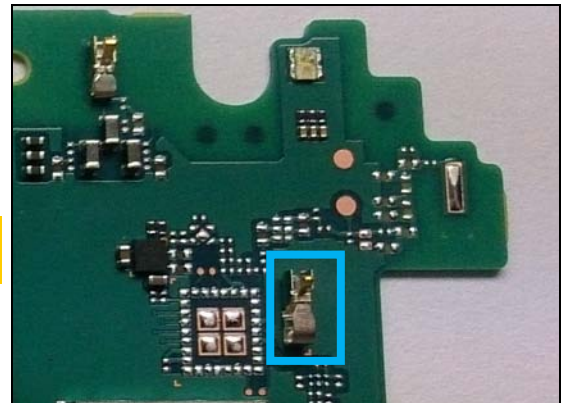
**Protect the Rf connector with capton tape!**



6

CN2645

**Replace if mechanical damaged. GND Contact (No or bad WLAN / BT)**

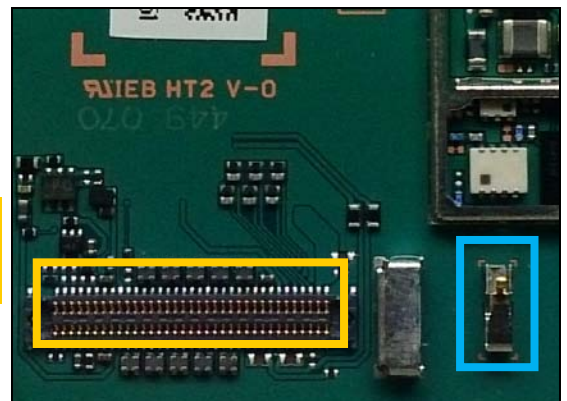


7

CN2646

**Replace if mechanical damaged. GND Contact, BtB connector.**

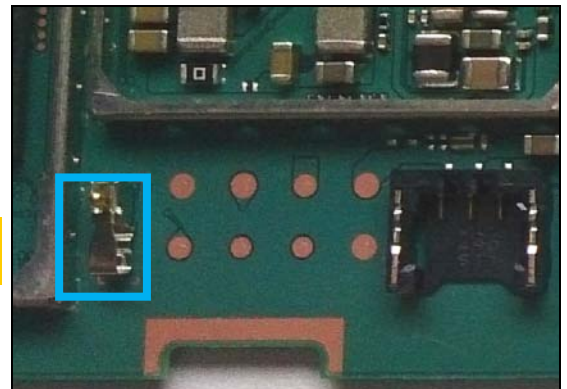
**Protect the BtB connector with capton tape!**



8

CN2647

**Replace if mechanical damaged. GND Contact, WtB connector.**





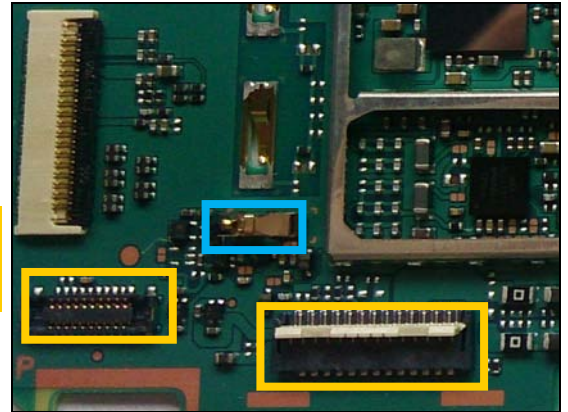
## Repair Actions: Additional Repair Info

9

CN2648

**Replace if mechanical damaged. GND Contact, BtB connector.**

**Protect the BtB connectors with capton tape!**

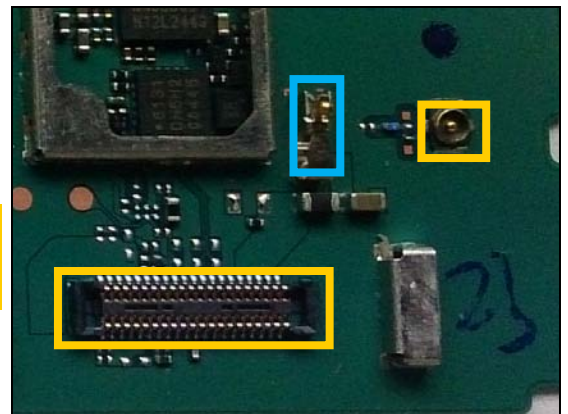


10

CN2649

**Replace if mechanical damaged. GND Contact, BtB connector.**

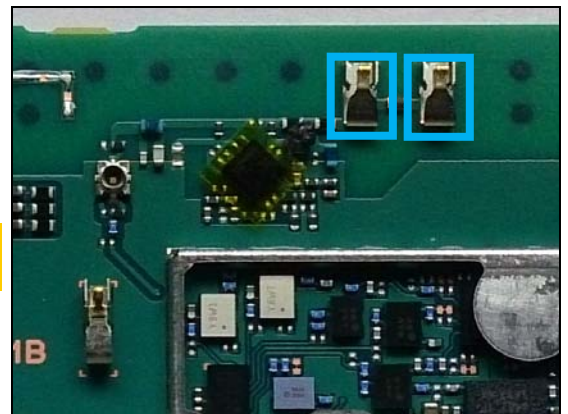
**Protect the BtB and RF connectors with capton tape!**



11

CN2661, CN2662

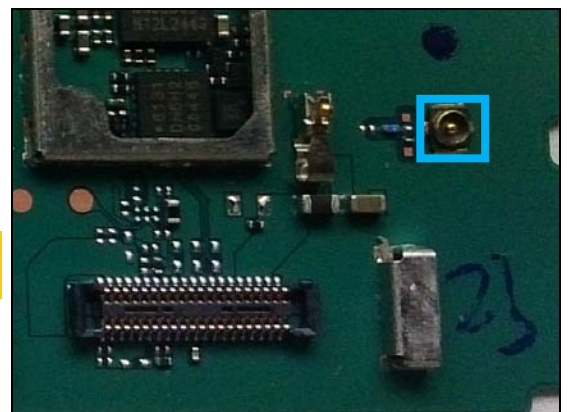
**Replace if mechanical damaged (No or bad network, main antenna)**



12

CN2801

**Replace if mechanical damaged (No or bad network, diversity antenna)**



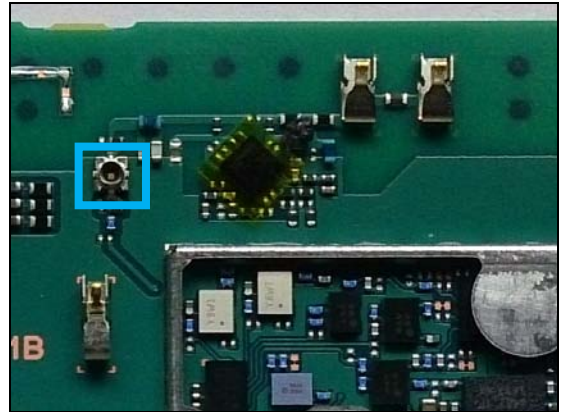


## Repair Actions: Additional Repair Info

13

CN2804

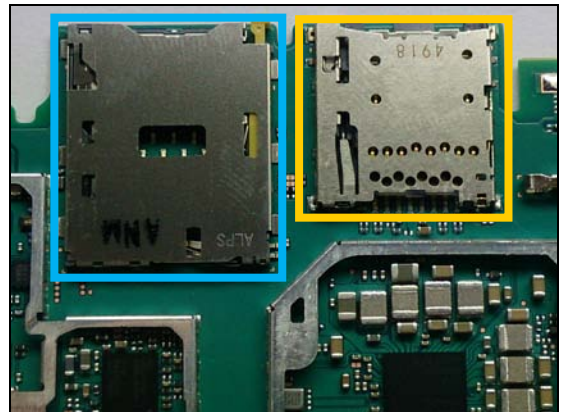
**Replace if open circuit 1-4 (No or bad network, main antenna)**



14

CN4000

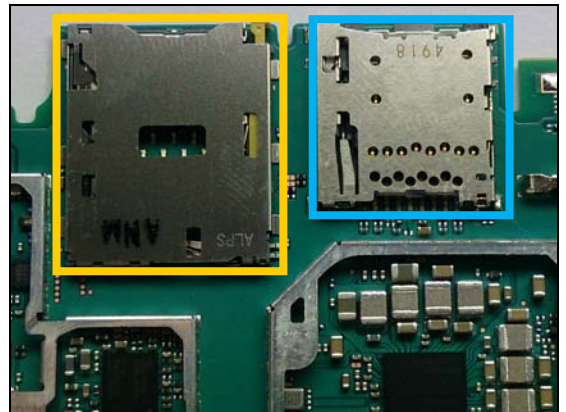
**Replace if mechanical damaged (No network, restart, No SIM card inserted, NFC SIM problem, reset problem)**  
**Protect the SD connector with capton tape!**



15

CN4100

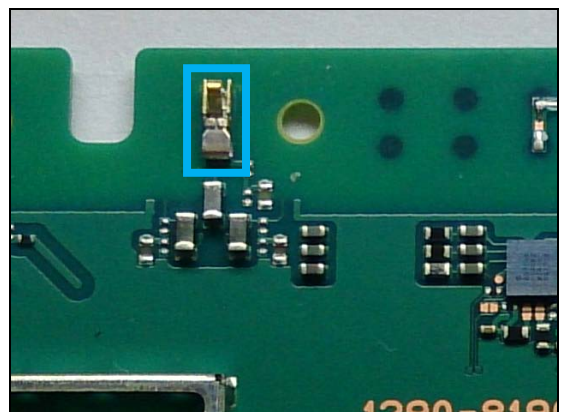
**Replace if mechanical damaged (No SD card)**  
**Protect the SIM connector with capton tape!**



16

CN5550

**Replace if mechanical damaged (Capacitive sensor)**

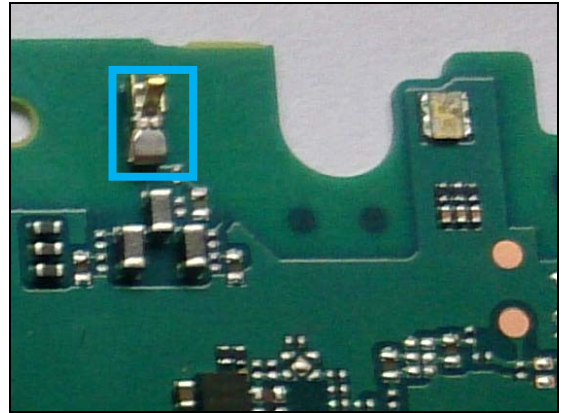


## Repair Actions: Additional Repair Info

17

CN5551

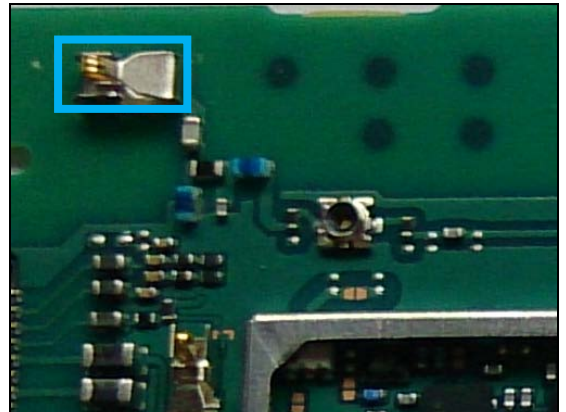
*Replace if mechanical damaged (Capacitive sensor)*



18

CN8000

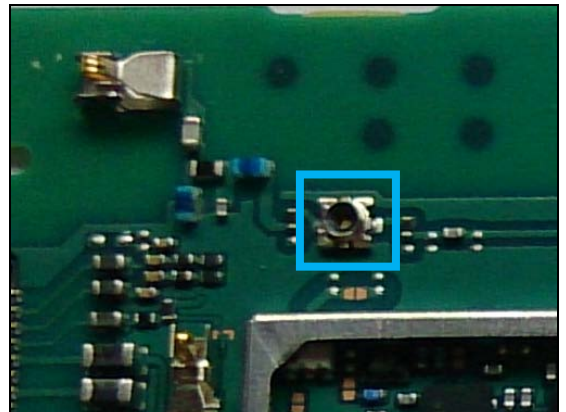
*Replace if mechanical damaged (No or bad WLAN / BT)*



19

CN8003

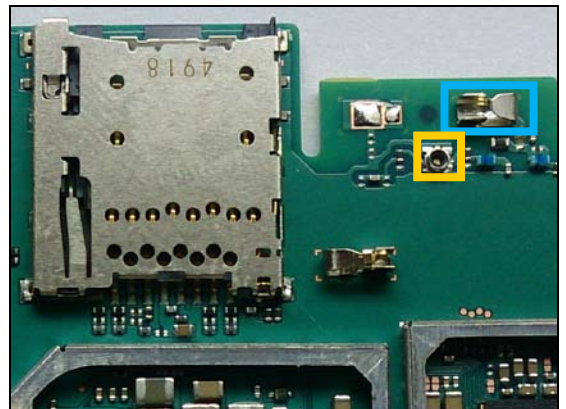
*Replace if open circuit 1-4 (No or bad WLAN / BT)*



20

CN8007

*Replace if mechanical damaged (No or bad WLAN / BT)*  
*Protect the RF connector with capton tape!*

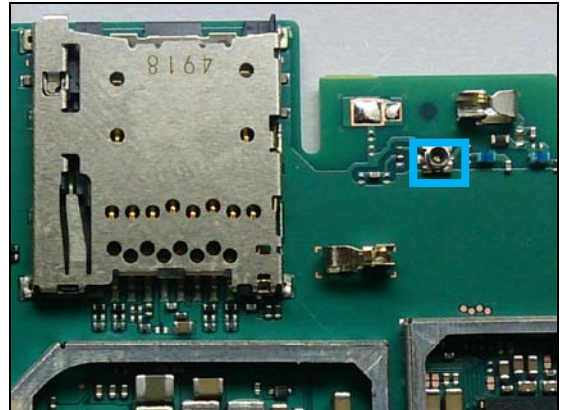


## Repair Actions: Additional Repair Info

**21**

**CN8008**

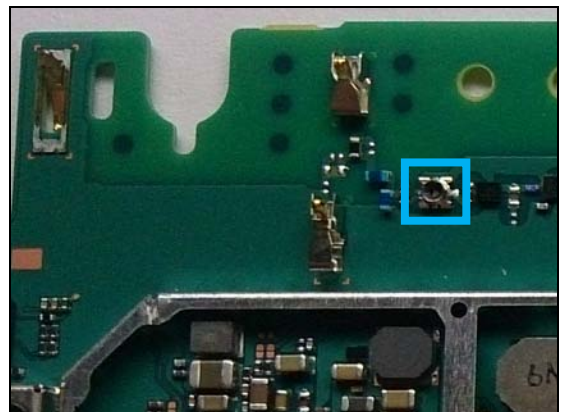
**Replace if open circuit 1-4 (No or bad WLAN / BT)**



**22**

**CN8401**

**Replace if open circuit 1-4 (No or bad GPS)**

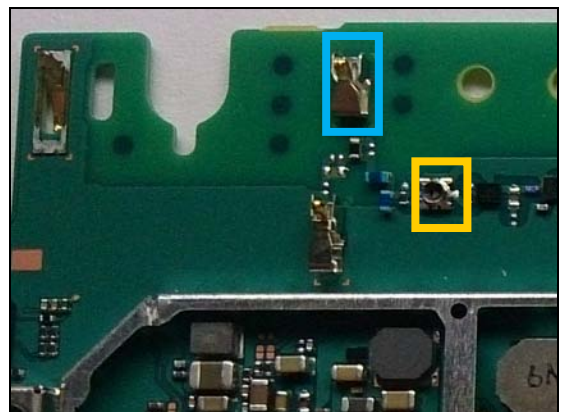


**23**

**CN8452**

**Replace if mechanical damaged (No or bad GPS)**

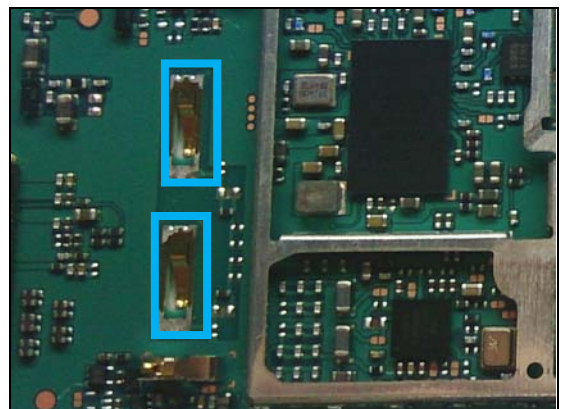
**Protect the RF connector with capton tape!**



**24**

**CN8650, CN8651**

**Replace if mechanical damaged (No or bad NFC)**



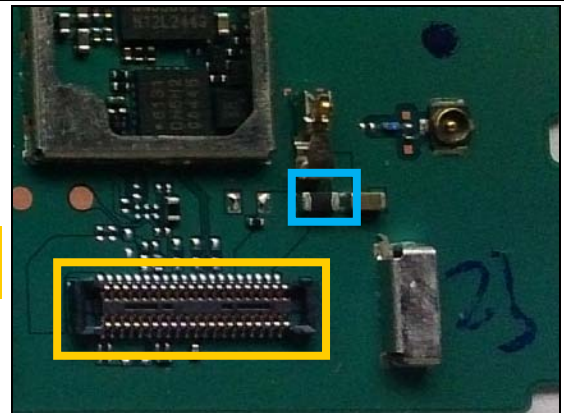


## Repair Actions: Additional Repair Info

**25**

**FB2205**

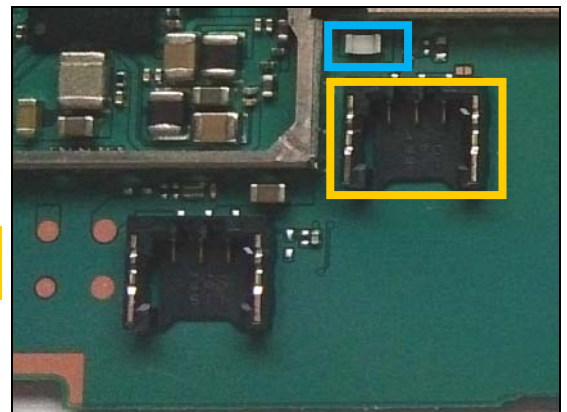
***Replace if open circuit (USB charger not working)  
Protect the BtB connector with capton tape!***



**26**

**R1306**

***Replace if open circuit. (Phone dead or power off)  
Protect the BtB connector with capton tape!***



## 4 Revision History

Rev.	Date	Changes / Comments
1	2015-05-11	Initial release